

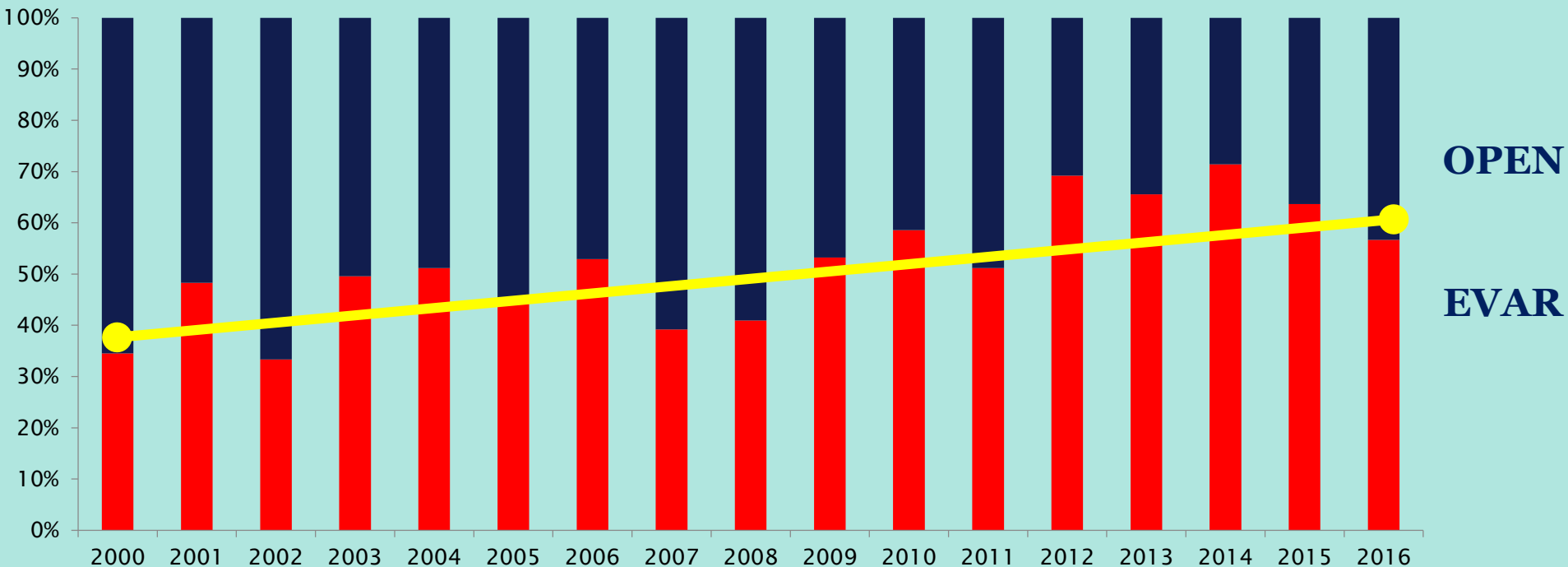
# Hostile Neck-of AAA Open Aortic Surgery

# Aortic Aneurysm Repair 2000 - 2016

Total: **1758** OPs

**EVAR: 900 (51,2%)**

**Open Repair: 858 (48,8%)**



## Asymtomatic AAA

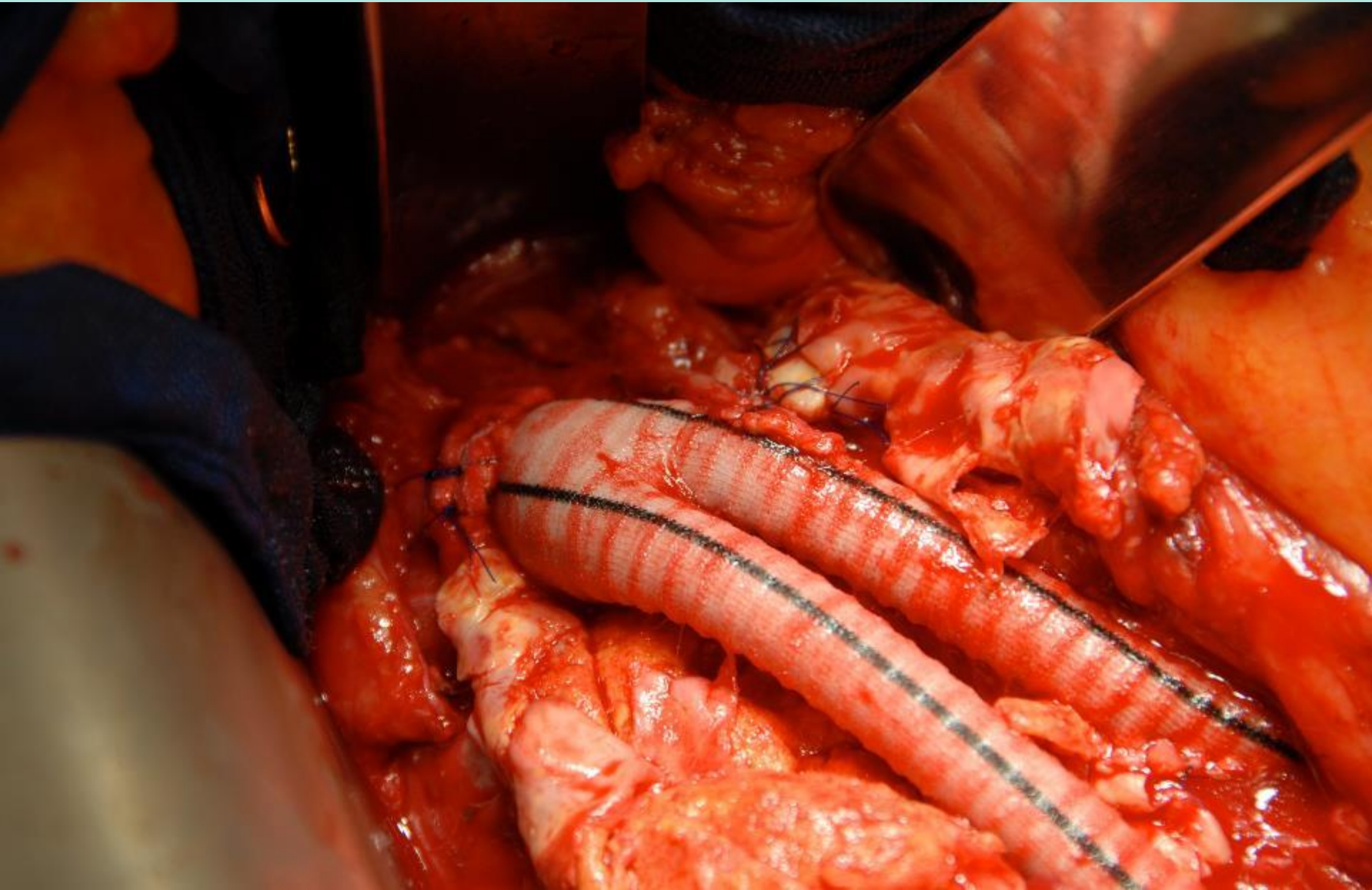
	Open	Endovascular	
<b>Mortality</b>	<b>4,6%</b> <b>6.2%</b>	<b>1.2%</b> <b>2.1%</b>	<b>DREAM NNT 29</b> <b>EVAR 1 NNT24</b>
<b>Mortality during follow up (4 years)</b>	<b>71%</b> <b>90%</b>	<b>74%</b> <b>90%</b>	<b>EVAR 1</b> <b>DREAM</b>
<b>Reinterventions</b>	<b>7%</b>	<b>15%</b>	<b>EVAR 1</b>
<b>QOL After 3 Months</b>	<b>n.s</b>	<b>n.s</b>	<b>DREAM</b>
<b>Mortality</b>	<b>2.8% (infra)</b> <b>4.5% (juxta)</b>	<b>2.3%</b>	<b>MUW</b>

# Procedural DIFFERENCES OPEN VS EVAR

	<b>EVAR</b>	<b>OPEN</b>
Planning/sizing	+++	+
Technical skills	+	+++
Learning Curve for Operator	+	+++
Possibility for Complications	+	+++
Reintervention Rate	+++	+

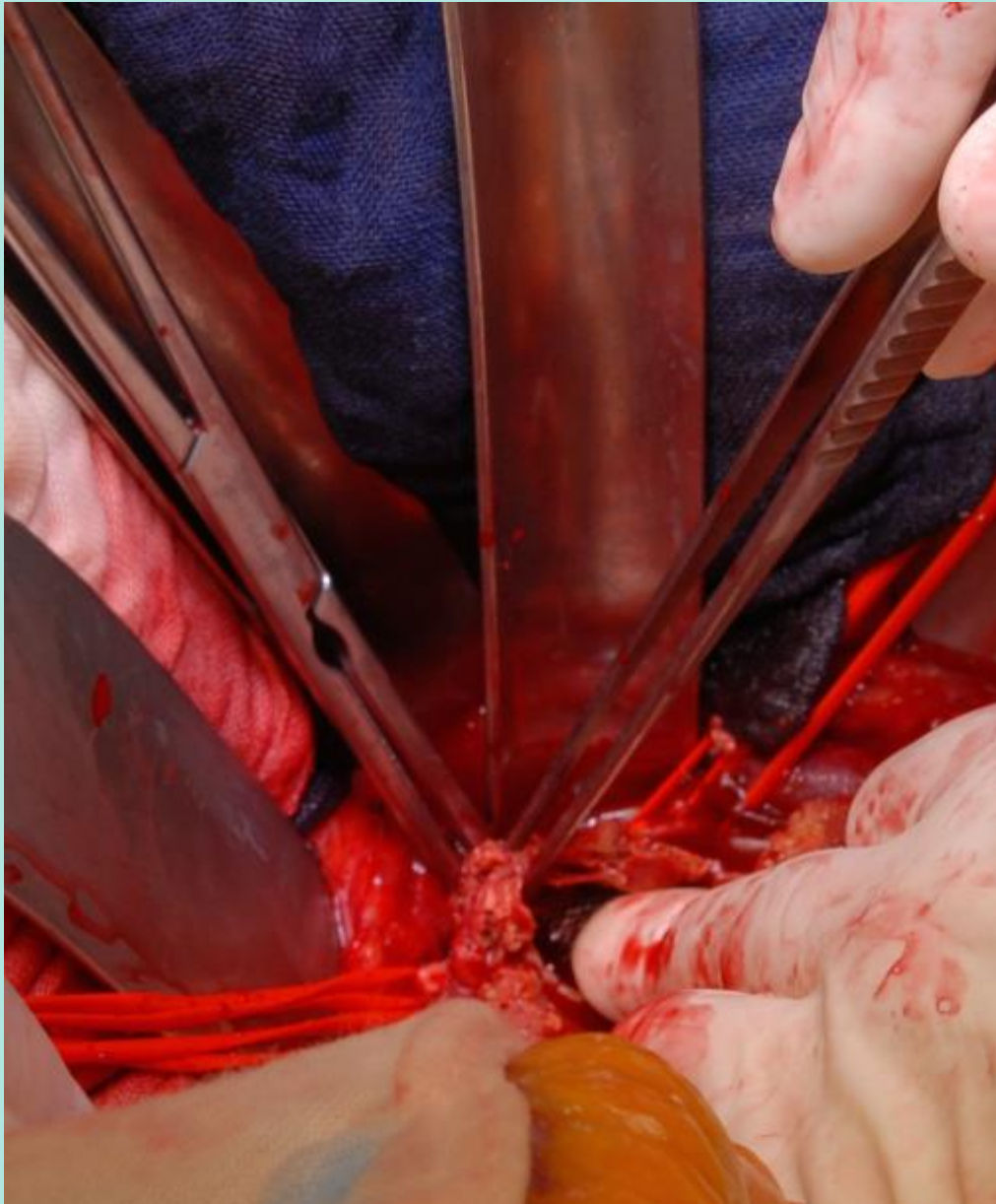
## Patient and anatomically related factors: Hostile neck for open vs hostile neck for endovascular

	Open	Endovascular
Neck Angulation >60°	-	+
<b>Thin Aortic Wall</b>	<b>++</b>	<b>-</b>
(Short) Distance to RA	-	++
Thrombus	++	++
Calcification of Aortic Wall	++	+
Left Renal Vein	+	-
(Reversed) Tapered Neck	-	++

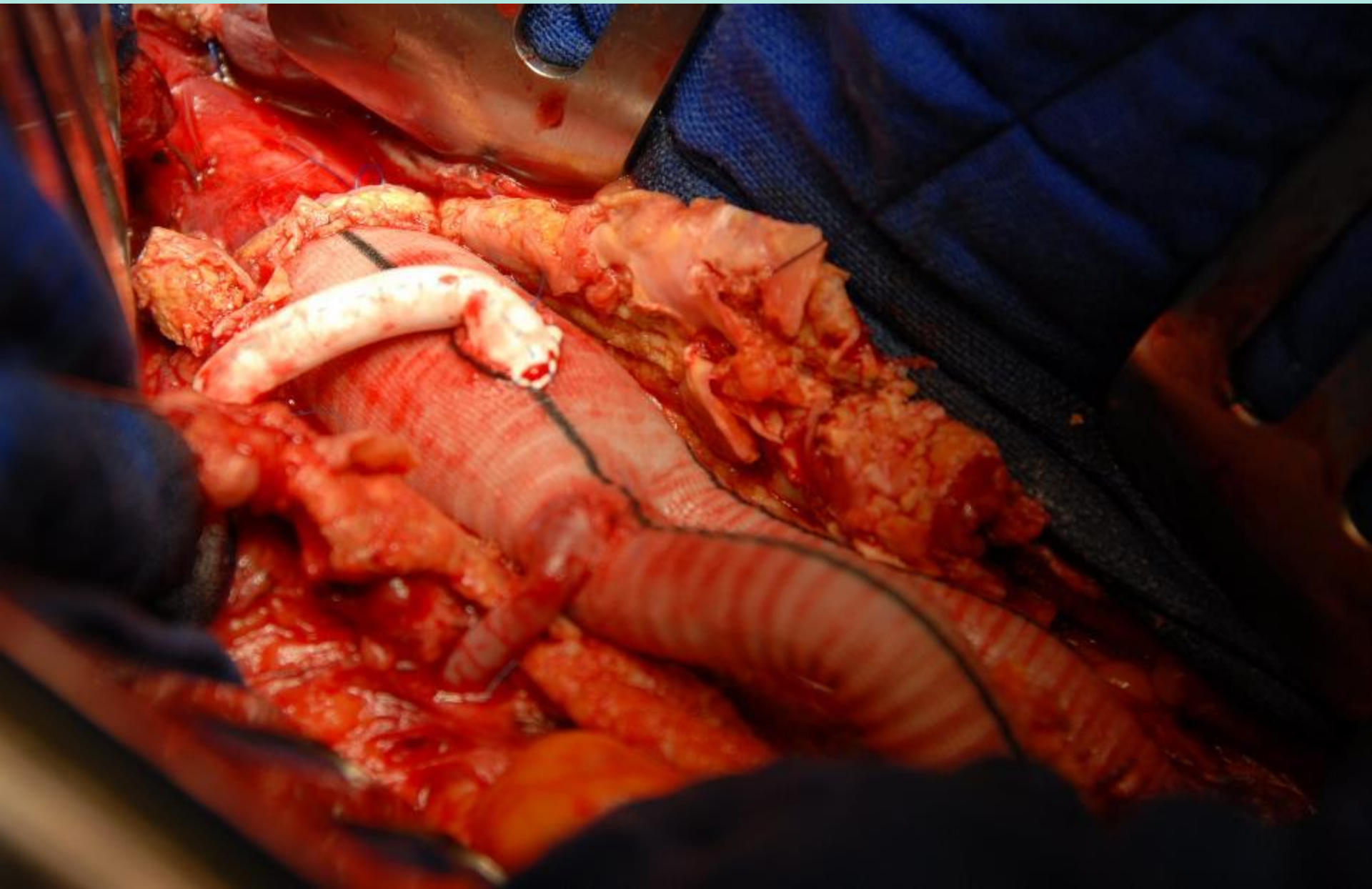


## Patient and anatomically related factors: Hostile neck for open vs hostile neck for endovascular

	Open	Endovascular
Neck Angulation >60°	-	+
Thin Aortic Wall	++	-
<b>(Short) Distance to RA</b>	<b>-</b>	<b>++</b>
Thrombus	++	++
Calcification of Aortic Wall	++	+
Left Renal Vein	+	-
(Reversed) Tapered Neck	-	++



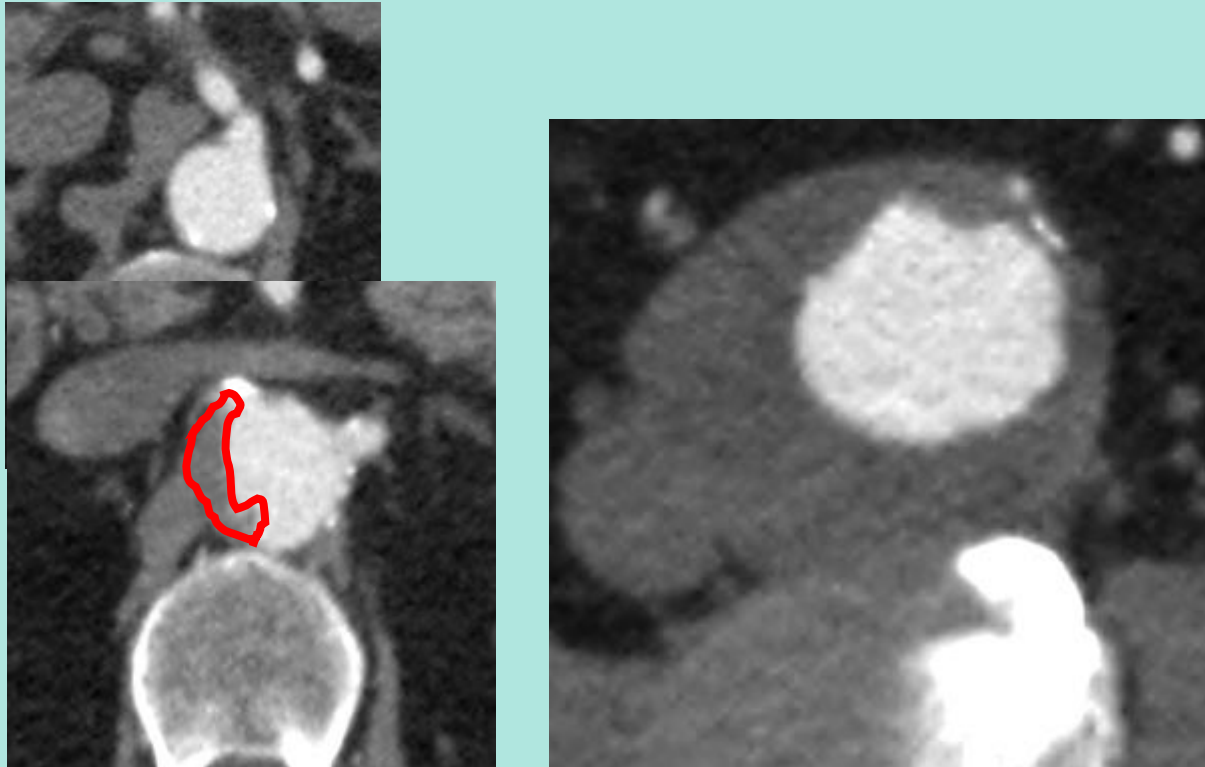




## Patient and anatomically related factors: Hostile neck for open vs hostile neck for endovascular

	Open	Endovascular
Neck Angulation >60°	-	+
Thin Aortic Wall	++	-
(Short) Distance to RA	-	++
<b>Thrombus</b>	<b>++</b>	<b>++</b>
Calcification of Aortic Wall	++	+
Left Renal Vein	+	-
(Reversed) Tapered Neck	-	++

# THROMBUS



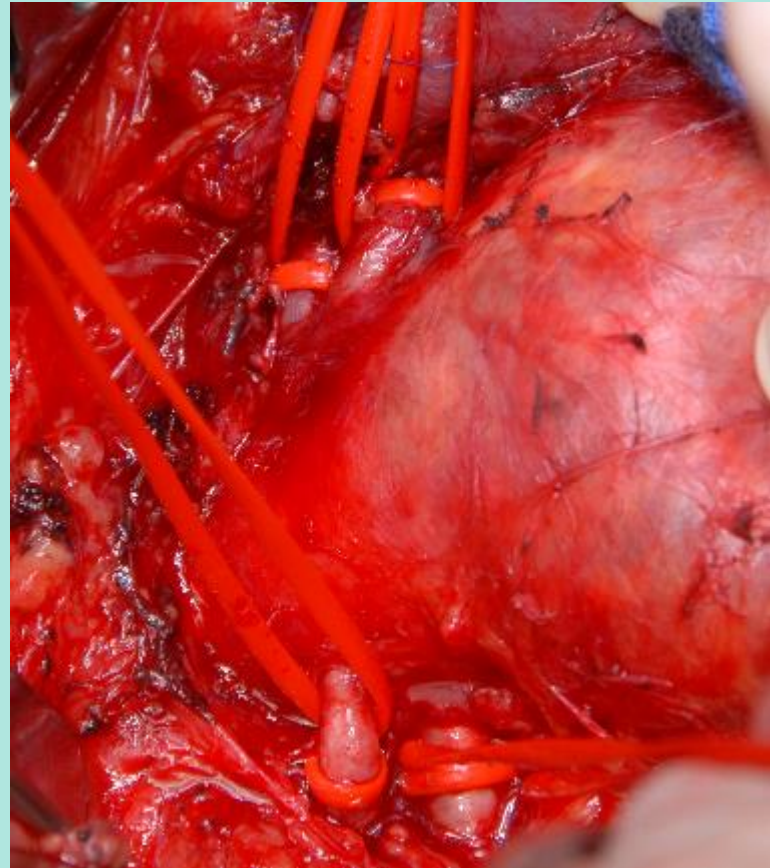
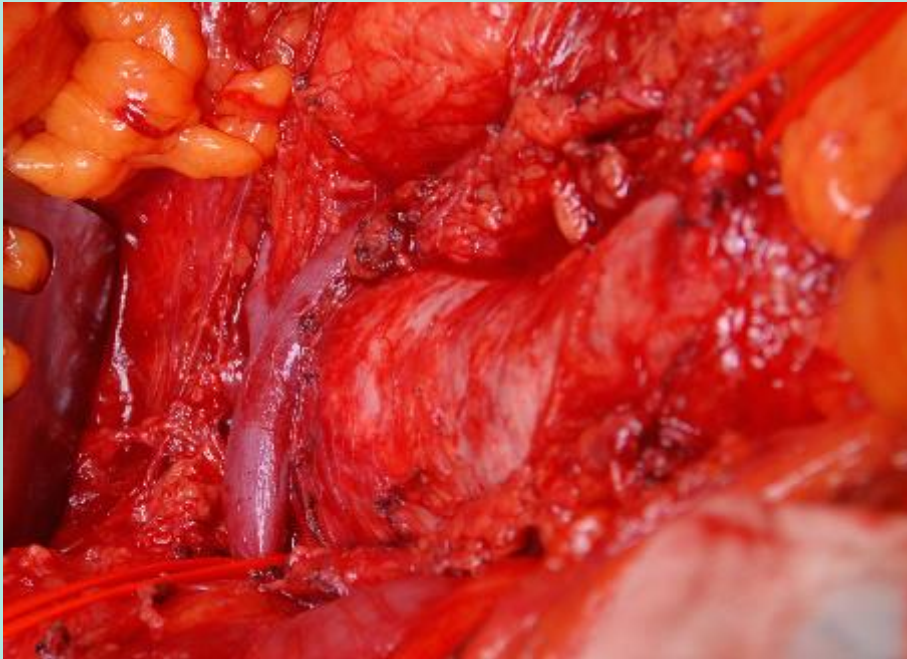
# Thrombus in the Neck

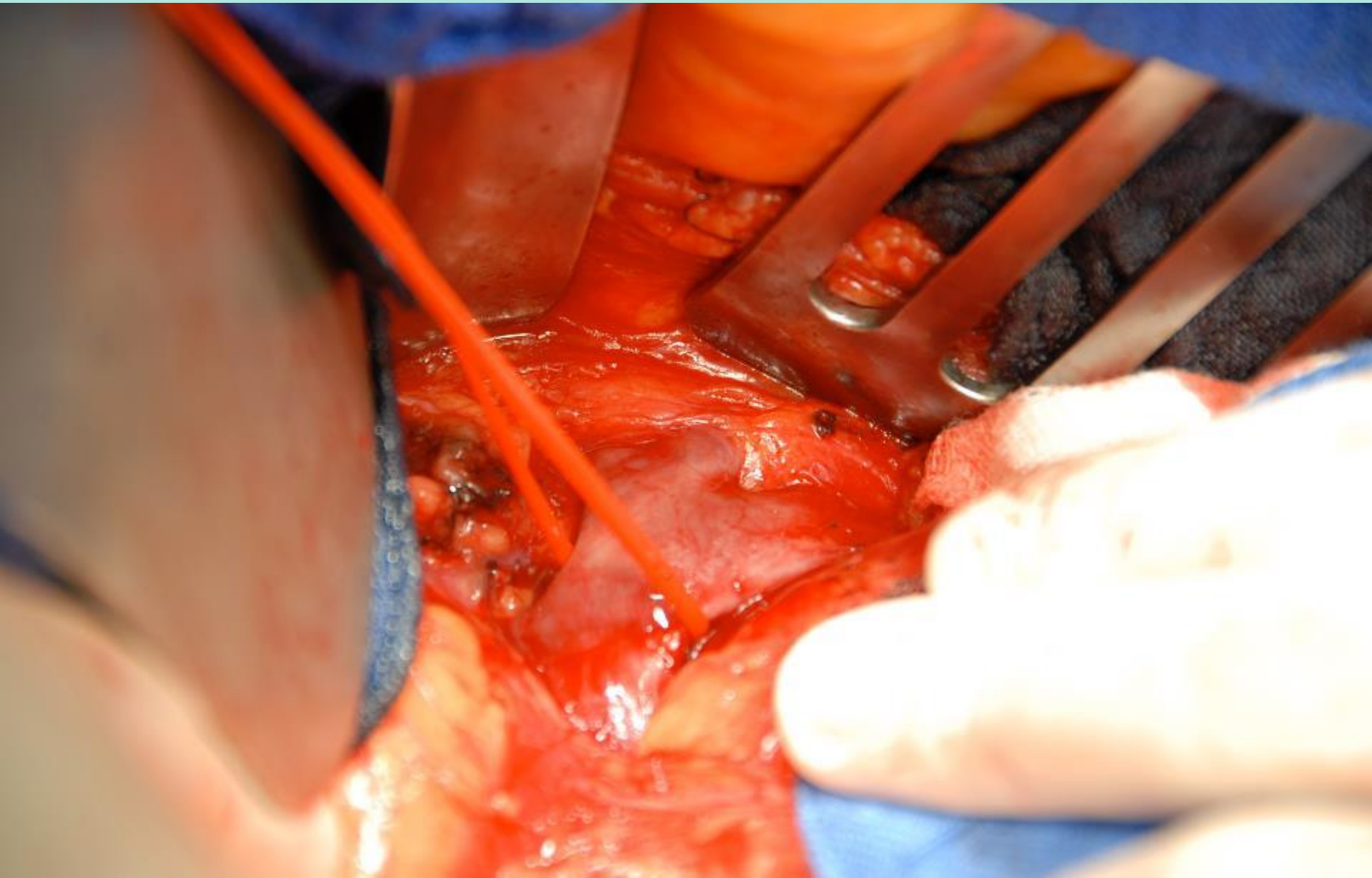


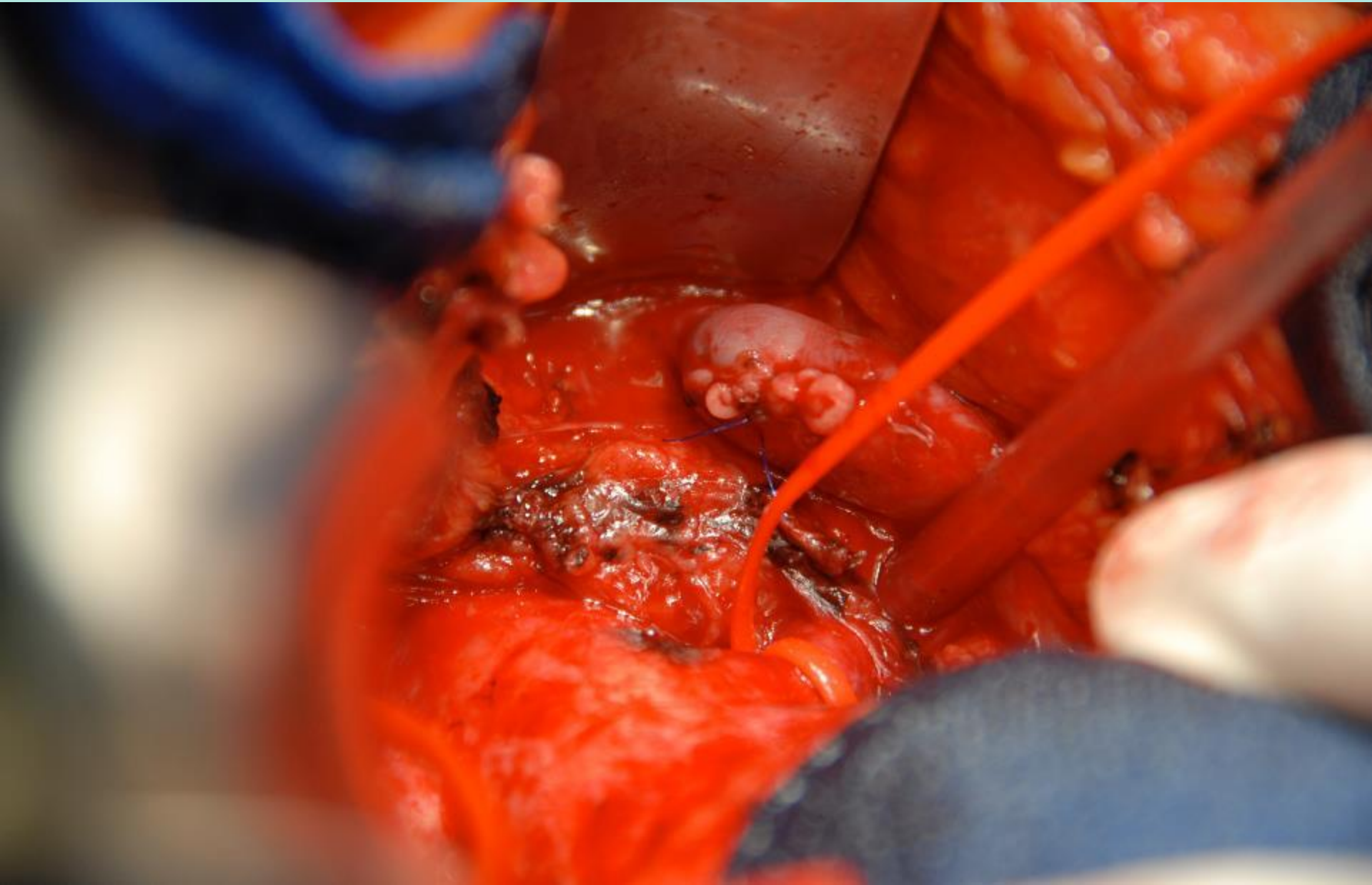
## Patient and anatomically related factors: Hostile neck for open vs hostile neck for endovascular

	Open	Endovascular
Neck Angulation >60°	-	+
Thin Aortic Wall	++	-
(Short) Distance to RA	-	++
Thrombus	++	++
Calcification of Aortic Wall	++	+
<b>Left Renal Vein</b>	<b>+</b>	<b>-</b>
(Reversed) Tapered Neck	-	++

# Division of the LRV

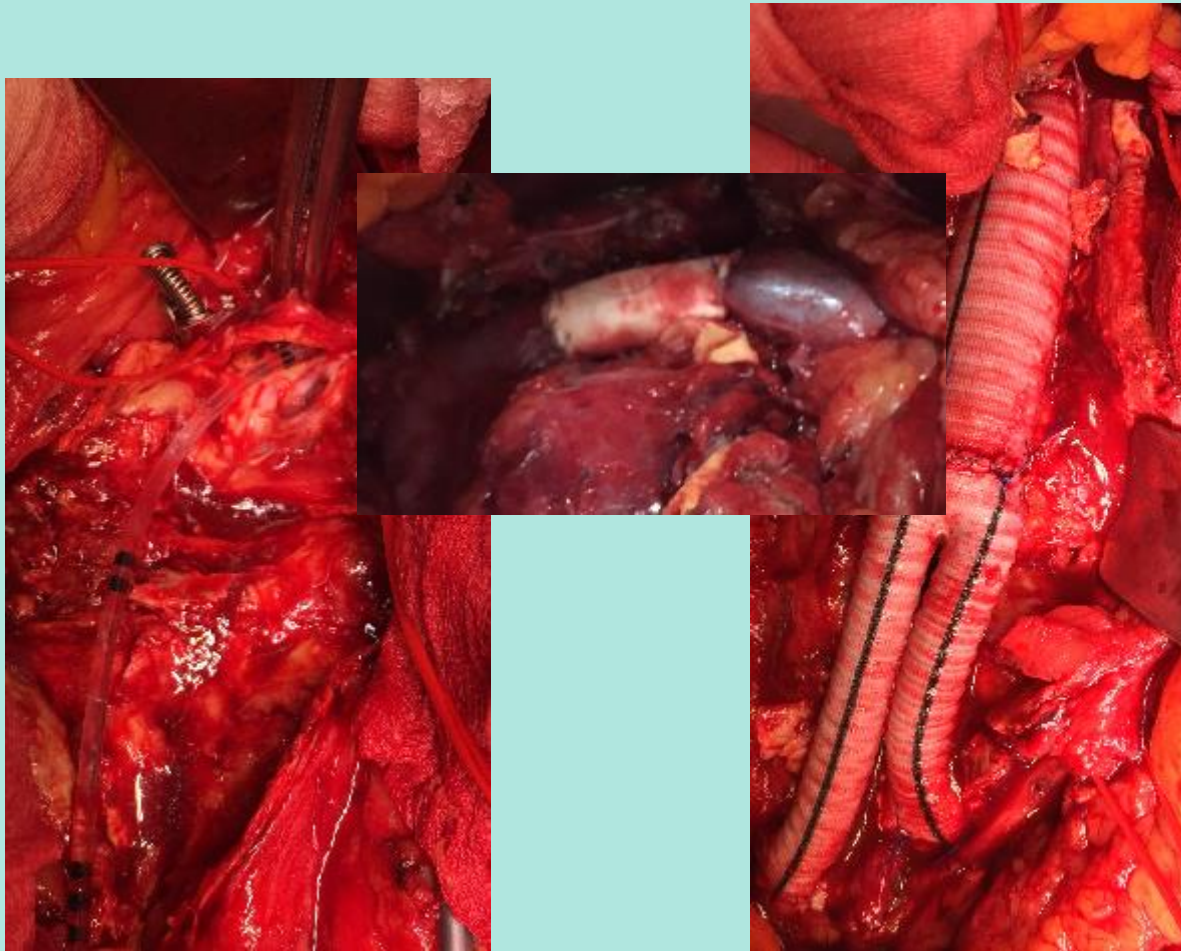








# Selective Renal Perfusion (Pruitt Cannula) and Reconstruction of LRV with PTFE



# Aortic Aneurysm Repair 2000 - 2016

Total: **1758** OPs

**EVAR: 900 (51,2%)**

**Open Repair: 858 (48,8%)**

